

Avalon

2014

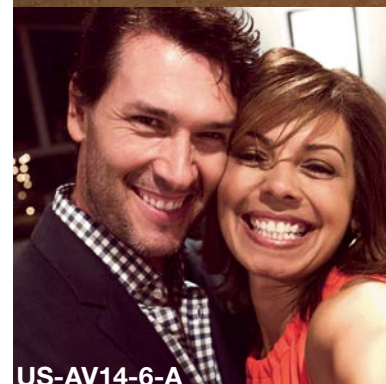
US-AV14-1-A



An uncompromised drive

Every angle of Avalon evokes elegance

The 2014 Toyota Avalon stands out no matter where you go. Its sculpted lines and curves create a distinguished profile, while a lightweight body and athletic stance give it a performance edge. Avalon was developed by a U.S. led design and engineering team, and is assembled in Kentucky as the purest expression of everything we love about driving. It all results in one thing: a feeling of excitement with every drive. Let's go places.



Limited shown in Magnetic Gray Metallic.



US-AV13-3-A

Limited shown in Classic Silver Metallic with Technology Package.

The science of luxury

A place where art and technology converge



US-AV13-4-A

US-AV13-5-A

US-AV13-6-A

XLE Touring interior shown in Almond.

Joy. Excitement. Desire. One touch can communicate so many things. This was the idea behind the technology that surrounds you in the 2014 Avalon. We created sleek Intelligent Touch controls that are simple to adjust, an available Entune® App Suite¹ that gives you access to more information than ever before, and a standard backup camera² that helps guide you into, or out of, the tight spots. Avalon has the technology and luxury to assure you get the most out of every drive.

See numbered footnotes in Disclosures section.

entune®
App Suite

Technology that connects. With a compatible smartphone, Avalon's available Entune® App Suite and multimedia system help keep you entertained and give you easy access to your information so you can better focus on driving. Stream music with Pandora®, locate restaurants with Bing™ and get movie tickets with MovieTickets.com. So much went into this car so you can get even more out of it.



US-AV13-7-B

A tailored environment

Beauty is in the details

Imagine an environment that feels as if it were created just for you. A space with controls that invite interaction, seats that cradle and lights that welcome. Technology would simplify, not complicate, and also adapt to your needs. You would be surrounded by beautifully stitched leather that feels handcrafted and luxurious to the touch. We put all of this in the Avalon's spacious interior and designed it to fit together seamlessly.

Premium leather Avalon Limited continues a heritage of ergonomic excellence with standard power-adjustable, premium perforated leather-trimmed heated and ventilated front seats, and leather-trimmed steering wheel and shift lever—like they're tailored to the driver.

eBin™ Technology simplified. Avalon Limited and Hybrid Limited offer the world's first in-console wireless charging*³ surface integrated into the eBin™. Just place your Qi compatible device on the nonslip surface and it charges.



US-AV13-9-A



US-AV13-8-A



US-AV13-499-A

Second row Luxury should not be for the driver only. Avalon's spacious rear seats allow passengers in the second row to feel like they're in first class. With standard three-zone climate control and heated rear seats on Avalon Limited, riding in an Avalon is just as rewarding as driving one.

Limited interior shown in Black. 2013 model shown.

*Available with Technology Package option.

See numbered footnotes in Disclosures section.



US-AV13-11-A

Limited shown in Attitude Black Metallic.

Passion that performs

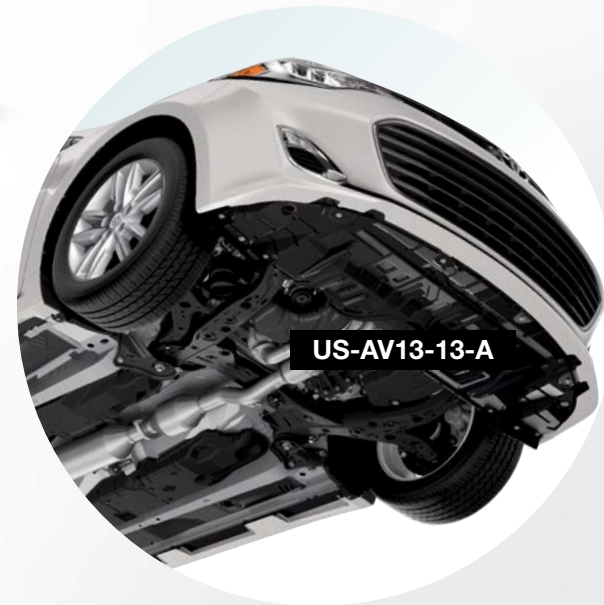
A bold way of looking at performance

The Avalon redefines the driving experience – no detail was overlooked. Every panel was sculpted for the open road. A drag coefficient of just .28 helps to improve efficiency and performance while a rigid chassis aids in better handling and a crisper response. Avalon has combined art and engineering to make sure your every moment behind the wheel is better than the last. This is a commitment to performance, and we broke every rule to bring you the purest expression of driving.



Independent suspension with Sport Mode: Avalon has fully independent suspension that adapts to the road to help give you more control. An available Sport Mode increases throttle response and quickens the electric power steering for livelier handling when desired.

Aerodynamic efficiency: Racing technology. Underneath the chassis, specially shaped diffuser panels reduce turbulence, resulting in enhanced control and reduced wind noise.



Performance that inspires

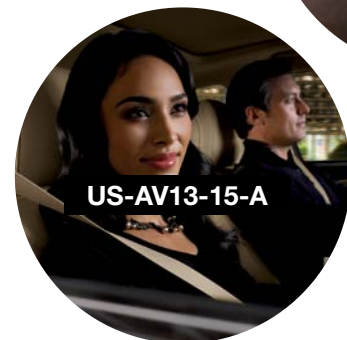
The art of driving has returned

It all started with a desire for a more connected driving experience. We designed available paddle shifters that allow a driver to change gears with the touch of a finger. We built an engine as powerful as it is efficient, with a 3.5-liter V6 that produces 268 horsepower and offers an EPA-estimated 31 mpg highway.⁴ Avalon is an absolute breakthrough in high-end driving and a bold direction for the road ahead.

A true driver's car Inspired by racing, available steering wheel-mounted paddle shifters provide for a more hands-on driving experience by letting you control when you shift and matching each rev for seamless downshifts. Combined with a 6-speed Electronically Controlled automatic Transmission with intelligence (ECT-i) that learns your driving style, Avalon makes sure that driving a Toyota will never be the same again.



US-AV13-16-A



US-AV13-15-A



US-AV13-17-A



US-AV13-18-C

See numbered footnotes in Disclosures section.

XLE Touring shown in Moulin Rouge Mica.

A radical drive

Avalon Hybrid

Avalon Hybrid was designed to offer an uncompromising level of performance. A driving experience that was more than refined — it was revolutionary. We used our proven Hybrid Synergy Drive[®] system that delivers a spirited ride while at the same time offering up to an EPA-estimated 40 combined mpg⁴ and a Super Ultra Low Emission Vehicle (SULEV)⁵ emission rating. The world is accelerating, and we're leading the charge.

est. city 40/39 est. hwy

Class-leading fuel economy⁴ Our Hybrid Synergy Drive[®] system and Electronically controlled Continuously Variable Transmission (ECVT) combine for fuel economy estimates that surpass those of many compact cars.⁷

Multi-Information Display (MID)

Avalon's MID shows you everything you need to know. See how much fuel you have left, check your current mpg and, on Avalon Limited, get turn-by-turn directions⁶ to your favorite spot — all on one display, to help you keep your eyes on the road.



US-AV13-19-A



US-AV13-20-D

HYBRID

XLE



Powertrain
<ul style="list-style-type: none">3.5-Liter V6 Engine6-speed automatic transmission268 hp @ 6200 rpm21 city/31 hwy/25 combined est. mpg⁴
Exterior Features
<ul style="list-style-type: none">17-in. silver-painted alloy wheelsQuadrobeam halogen headlights with auto on/off feature and Daytime Running Lights (DRL)Dual chrome-tipped integrated exhaustSmart Key System⁹ on front doors with Push Button Start
Interior Features
<ul style="list-style-type: none">Leather-trimmed seats and steering wheel; heated power front seatsDisplay Audio — includes 6.1-in. touch-screen, AM/FM CD, auxiliary audio jack, USB port¹⁰ and <i>Bluetooth</i>^{®11} wireless technologyIntelligent Touch controls for climate and audio systemDual zone automatic climate control with rear-seat ventsBackup camera²eBin™ storage with two 12V power outlets, auxiliary audio jack, USB port¹⁰
Safety/Convenience
<ul style="list-style-type: none">Star Safety System™ and ten airbags¹²

XLE Premium

Adds to or replaces features offered on XLE



Powertrain
<ul style="list-style-type: none">3.5-Liter V6 Engine6-speed automatic transmission268 hp @ 6200 rpm21 city/31 hwy/25 combined est. mpg⁴
Exterior Features
<ul style="list-style-type: none">Power tilt/slide moonroofSmart Key System⁹ on front doors and trunk with Push Button Start
Interior Features
<ul style="list-style-type: none">Auto-dimming rearview mirror with HomeLink^{®13}
Options
<ul style="list-style-type: none">Display Audio with Navigation⁸ and Entune[®] App Suite¹ — includes 6.1-in. touch-screen, AM/FM CD, SiriusXM Radio¹⁴ with 90-day All Access trial, HD Radio⁵ auxiliary audio jack, USB port¹⁰ and <i>Bluetooth</i>^{®11} wireless technology

XLE Touring

Adds to or replaces features offered on XLE Premium



Powertrain
<ul style="list-style-type: none">3.5-Liter V6 Engine6-speed automatic transmission268 hp @ 6200 rpm21 city/31 hwy/24 combined est. mpg⁴
Exterior Features
<ul style="list-style-type: none">18-in. anthracite-painted alloy wheelsWide-angle fog lights
Interior Features
<ul style="list-style-type: none">Paddle shiftersDisplay Audio with Navigation⁸ and Entune[®] App Suite¹ — includes 6.1-in. touch-screen, AM/FM CD, SiriusXM Radio¹⁴ with 90-day All Access trial, HD Radio⁵ auxiliary audio jack, USB port¹⁰ and <i>Bluetooth</i>^{®11} wireless technologyDriver's seat and outside mirrors memory systems
Options
<ul style="list-style-type: none">Blind Spot Monitor (BSM)¹⁵ with Rear Cross-Traffic Alert (RCTA)¹⁶

Limited

Adds to or replaces features offered on XLE Touring



Powertrain
<ul style="list-style-type: none">3.5-Liter V6 Engine6-speed automatic transmission268 hp @ 6200 rpm21 city/31 hwy/24 combined est. mpg⁴
Exterior Features
<ul style="list-style-type: none">18-in. silver-painted alloy wheelsHigh Intensity Discharge (HID) Quadrobeam headlights with auto on/off feature and LED Daytime Running Lights (DRL)Auto-dimming heated power outside mirrorsRain-sensing wipers
Interior Features
<ul style="list-style-type: none">Premium HDD Navigation⁸ with Entune[®] App Suite¹ and JBL[®] — includes 7-in. touch-screen, AM/FM CD, JBL[®] speakers, SiriusXM Radio¹⁴ with 90-day All Access trial, HD Radio⁵ auxiliary audio jack, USB port¹⁰ and <i>Bluetooth</i>^{®11} wireless technologyPremium perforated leather-trimmed heated and ventilated front seats; heated rear seatsThree-zone automatic climate controlPower rear sunshade
Safety/Convenience
<ul style="list-style-type: none">Blind Spot Monitor (BSM)¹⁵ with Rear Cross-Traffic Alert (RCTA)¹⁶Safety Connect^{®17}
Options
<ul style="list-style-type: none">Technology Package: includes Dynamic Radar Cruise Control (DRCC)¹⁸ Automatic High Beam¹⁹ Pre-Collision System (PCS)²⁰ and Qi wireless charging³ capability for eBin™ storage tray

Hybrids

XLE Premium



Powertrain
<ul style="list-style-type: none">2.5-Liter 4-cylinder Hybrid engineElectronically controlled Continuously Variable Transmission (ECVT)Hybrid System Net Power: 200 hp (149 kW)40 city/39 hwy/40 combined est. mpg⁴
Exterior Features
<ul style="list-style-type: none">17-in. silver-painted alloy wheelsQuadrobeam halogen headlights with auto on/off feature and Daytime Running Lights (DRL)Hidden exhaust with chrome-accented coverPower tilt/slide moonroofSmart Key System⁹ on front doors and trunk with Push Button Start
Interior Features
<ul style="list-style-type: none">Leather-trimmed seats and steering wheel; heated power front seatsDisplay Audio — includes 6.1-in. touch-screen, AM/FM CD, auxiliary audio jack, USB port¹⁰ and <i>Bluetooth</i>^{®11} wireless technologyIntelligent Touch controls for climate and audio systemDual zone automatic climate control with rear-seat ventsBackup camera²eBin™ storage with two 12V power outlets, auxiliary audio jack, USB port¹⁰Auto-dimming rearview mirror with HomeLink^{®13}
Safety/Convenience
<ul style="list-style-type: none">Star Safety System™ and ten airbags¹²
Options
<ul style="list-style-type: none">Display Audio with Navigation⁸ and Entune[®] App Suite¹ — includes 6.1-in. touch-screen, AM/FM CD, SiriusXM Radio¹⁴ with 90-day All Access trial, HD Radio⁵ auxiliary audio jack, USB port¹⁰ and <i>Bluetooth</i>^{®11} wireless technology

XLE Touring

Adds to or replaces features offered on Hybrid XLE Premium



Powertrain
<ul style="list-style-type: none">2.5-Liter 4-cylinder Hybrid engineElectronically controlled Continuously Variable Transmission (ECVT)Hybrid System Net Power: 200 hp (149 kW)40 city/39 hwy/40 combined est. mpg⁴
Exterior Features
<ul style="list-style-type: none">Wide-angle fog lights
Interior Features
<ul style="list-style-type: none">Display Audio with Navigation⁸ and Entune[®] App Suite¹ — includes 6.1-in. touch-screen, AM/FM CD, SiriusXM Radio¹⁴ with 90-day All Access trial, HD Radio⁵ auxiliary audio jack, USB port¹⁰ and <i>Bluetooth</i>^{®11} wireless technologyDriver's seat and outside mirrors memory systems
Options
<ul style="list-style-type: none">Blind Spot Monitor (BSM)¹⁵ with Rear Cross-Traffic Alert (RCTA)¹⁶

Limited

Adds to or replaces features offered on Hybrid XLE Touring



Powertrain
<ul style="list-style-type: none">2.5-Liter 4-cylinder Hybrid engineElectronically controlled Continuously Variable Transmission (ECVT)Hybrid System Net Power: 200 hp (149 kW)40 city/39 hwy/40 combined est. mpg⁴
Exterior Features
<ul style="list-style-type: none">High Intensity Discharge (HID) Quadrobeam headlights with auto on/off feature and LED Daytime Running Lights (DRL)Auto-dimming heated power outside mirrorsRain-sensing wipers
Interior Features
<ul style="list-style-type: none">Premium HDD Navigation⁸ with Entune[®] App Suite¹ and JBL[®] — includes 7-in. touch-screen, AM/FM CD, JBL[®] speakers, SiriusXM Radio¹⁴ with 90-day All Access trial, HD Radio⁵ auxiliary audio jack, USB port¹⁰ and <i>Bluetooth</i>^{®11} wireless technologyPremium perforated leather-trimmed heated and ventilated front seats; heated rear seatsThree-zone automatic climate controlPower rear sunshade
Safety/Convenience
<ul style="list-style-type: none">Blind Spot Monitor (BSM)¹⁵ with Rear Cross-Traffic Alert (RCTA)¹⁶Safety Connect^{®17}
Options
<ul style="list-style-type: none">Technology Package: includes Dynamic Radar Cruise Control (DRCC)¹⁸ Automatic High Beam¹⁹ Pre-Collision System (PCS)²⁰ and Qi wireless charging³ capability for eBin™ storage tray

Safety

Inspired by the unexpected

It would be great to drive in a world with no surprises, a world where everyone paid attention while they were driving. That world does not exist. The moments when things don't go as planned inspired the six advanced features in the Star Safety System.™ **STAR**
SAFETY SYSTEM
An available Blind Spot Monitor (BSM)¹⁵ can signal the unseen, and a backup camera² helps you with the unknown. Add a class-leading ten standard airbags^{12,21} and you have a system working together with one purpose in mind: a more confident drive.

Ten airbags

Avalon comes standard with ten airbags, including driver and front passenger Advanced Airbag System (A, B), driver and front passenger seat-mounted side airbags (C, D), driver and front passenger knee airbags (E, F), rear seat-mounted side airbags (G, H) and front and rear side curtain airbags (I, J).



Blind Spot Monitor (BSM) with Rear Cross-Traffic Alert (RCTA)¹⁶

The available Blind Spot Monitor (BSM) with Rear Cross-Traffic Alert (RCTA) uses radar technology to help you identify vehicles that may not be visible when changing lanes or when backing out of the driveway. When a vehicle is detected, the system illuminates a warning indicator on the appropriate sideview mirror, and RCTA also makes an audible warning so you know to proceed with care.

Colors



Attitude Black Metallic



Parisian Night Pearl



Cypress Pearl



Sizzling Crimson Mica



Moulin Rouge Mica



Crème Brulee Mica



Magnetic Gray Metallic



Classic Silver Metallic



Blizzard Pearl
Extra-cost color

Trim



Black leather trim



Almond leather trim



Gray leather trim

Wheels



US-AV13-28-A
Hybrid alloy wheel



US-AV13-29-A
XLE and XLE
Premium alloy wheel



US-AV13-30-B
XLE Touring alloy wheel



US-AV13-30-A
Limited alloy wheel

Accessories

Add a personal touch to your Avalon with Genuine Toyota Accessories. Some accessories may not be available in all regions of the country. See your Toyota dealer for details.



US-AV13-522-A

Mudguards



US-AV13-520-A

Rear bumper appliqué



US-AV13-521-A

Paint protection film – hood and fenders and front bumper²²



US-AV13-523-A

Carpet trunk mat²³



US-AV13-519-A

Carpet floor mats²⁴



US-AV13-534-A

Cargo tray²³



US-AV13-535-A

All-weather floor mats²⁴



US-AV13-533-A

Illuminated doorsills

Alloy wheel locks
All-weather floor mats²⁴
Ashtray cup
Cargo net – envelope²³
Cargo tote²³

Cargo tray²³
Carpet floor mats²⁴
Carpet trunk mat²³
Door edge guards
Emergency assistance kit

First aid kit
Glass Breakage Sensor (GBS)
Illuminated doorsills
Mudguards

Paint protection film – hood and fenders and front bumper²²
Rear bumper appliqué
Remote Engine Starter

CARS BUILT FOR THE WAY YOU LIVE

At Toyota, we build cars for how you live. From building advanced safety features designed to help prevent crashes to driving cross-country to understand how we can make your driving experience better, our work starts with understanding your needs. Building cars for how you live also means thinking about tomorrow—from fuel efficiency and environmental innovations, to things beyond cars, like a bicycle that you can control with your mind. And because what we learn building cars can help improve lives in other places, we do things like help communities rebuild their homes quickly after a disaster and work with soup kitchens to help them serve more people faster. Toyota. Built for how you live. Together we are going places.

DISCLOSURES

1. Always drive safely, obey traffic laws and focus on the road and traffic conditions while driving. Select Entune® App Suite apps use a large amount of data and you are responsible for all data charges. Apps and services vary by phone and carrier; not all services available all the time and in all locations, and are subject to change. Apps identified by "TM" or "®" are trademarks or registered trademarks of their respective companies and cannot be used without permission. See toyota.com/entune for the latest information regarding registration, apps and services, and other details. 2. The backup camera does not provide a comprehensive view of the rear area of the vehicle. You should also look around outside your vehicle and use your mirrors to confirm rearward clearance. Cold weather will limit effectiveness and view may become cloudy. 3. Qi wireless charging may not be compatible with all mobile phones, MP3/WMA players and like models. 4. 2013 EPA-estimated mileage. Actual mileage will vary. 5. Meets Tier 2/Bin 3 Federal emissions standard 6. Based on manufacturers' data for premium midsize segment. 7. Based on compact car, manufacturer's segmentation. 2013 EPA-estimated 40 city/39 highway/40 combined mileage for Avalon Hybrid. Actual mileage will vary. 8. Always drive safely, obey traffic laws and focus on the road and traffic conditions while driving. Availability and accuracy of the information provided by the Navigation system or any HD services are dependent upon many factors. Use common sense when relying on information provided. Services and programming subject to change. Services not available in every city or roadway. Navigation updates are available at an additional cost from your Toyota dealer. See your *Navigation System Owner's Manual* or Toyota dealer for details. HD Radio™ Technology manufactured under license from iBiquity Digital Corporation U.S. and Foreign Patents. HD Radio™ and the HD, HD Radio, and "Arc" logos are proprietary trademarks of iBiquity Digital Corp. 9. The Smart Key System may interfere with some pacemakers or cardiac defibrillators. If you have one of these medical devices, please talk to your doctor to see if you should deactivate this system. 10. May not be compatible with all mobile phones, MP3/WMA players and like models. 11. The Bluetooth® word mark and logos are registered trademarks owned by Bluetooth SIG, Inc. and any use of such marks by Toyota is under license. Other trademarks and trade names are those of their respective owners. The phones on toyota.com have been tested for Bluetooth® wireless technology compatibility with Toyota vehicles. Performance will vary based on phone software version, coverage and your wireless carrier. Phones are warranted by their manufacturer, not Toyota. 12. All the airbag (AB) systems are Supplemental Restraint Systems. All ABs (if installed) are designed to initiate only under certain conditions and in certain types of severe collisions: frontal and knee ABs typically inflate in frontal collisions; side and side curtain ABs in side collisions; Roll-Sensing Curtain ABs at a severe tilt degree, roll or lateral G-force. In all other accidents, the ABs will not inflate. To decrease the risk of injury from an inflating AB, always wear seatbelts, sit upright in the middle of the seat as far back as possible and do not lean against the door. Do not put objects in front of an AB or around the seatback. Do not use a rearward-facing child seat in any front passenger seat. The force of an inflating AB may cause serious injury or death. See your *Owner's Manual* for further information/warnings. 13. HomeLink® is a registered trademark of Johnson Controls, Inc. 14. SiriusXM services require a subscription after 90-day trial period, and are sold separately or as a package. **Subscriptions governed by SiriusXM Customer Agreement; see available at www.siriusxm.com. If you decide to continue your SiriusXM service at the end of your complimentary trial, the plan you choose will automatically renew and bill at then-current rates until you call 1-866-635-2349 to cancel.** Fees and programming subject to change. Available only to those at least 18 years of age in the 48 contiguous United States and D.C. 15. Do not rely exclusively on the Blind Spot Monitor to determine if a lane change is safe. Always look over your shoulder and use your turn signal before changing lanes. There are several limitations to the function, detection, range and clarity of the monitor. For a complete list of limitations and directions regarding use of the monitor, please see the *Owner's Manual*. 16. Do not rely exclusively on the Rear Cross-Traffic Alert system. Always look over your shoulder and use your mirrors to confirm rear clearance. There are limitations to the function, detection, range and clarity of the system. To learn more, see your *Owner's Manual*. 17. Contact with the Safety Connect® response center is dependent upon the telematics device being in operative condition, cellular connection availability, navigation map data and GPS satellite signal reception, which can limit the ability to reach the response center or receive emergency service support. Enrollment and Telematics Subscription Service Agreement required. A variety of subscription terms is available; charges vary by subscription term selected. 18. Dynamic Radar Cruise Control is designed to assist the driver and is not a substitute for safe and attentive driving practices. Please see your *Owner's Manual* for important instructions and cautions. 19. The Automatic High Beam system operates at speeds above 21 mph. Situations such as a dirty windshield, variable weather, lighting conditions and hilly terrain will limit effectiveness, requiring the driver to manually turn off. See *Owner's Manual* for details. 20. The Pre-Collision System is designed to help reduce the crash speed and damage in certain frontal collisions only. They are not collision-avoidance systems and are not substitutes for safe and attentive driving. System effectiveness depends on many factors such as speed, driver input and road conditions. See your *Owner's Manual* for further information. 21. Airbag quantities based on Toyota industry analysis. Class based on Polk Full-Size non-luxury segment. 22. The Toyota Genuine Accessory Warranty will only apply when the installation is performed by a trained Toyota-approved installer. Please see dealer for details. 23. Cargo and load capacity limited by weight and distribution. 24. To avoid potential interference with pedal operation, do not install a floor mat on top of an existing floor mat. Each mat must be secured with either quarter-turn fasteners or retention hooks (clips). This floor mat was designed specifically for use in this model year vehicle and SHOULD NOT be used in any other vehicle.

TOYOTA FINANCIAL SERVICES



Toyota Rewards Visa®

Toyota helps you get more out of every dollar you spend. By rewarding you for every purchase you make, the Toyota Rewards Visa® adds even more value to doing the things you love.

Turn everything you buy into points to redeem toward parts, accessories or an eligible vehicle purchase or lease at your Toyota dealer. Earn 5 points for every \$1 spent at participating Toyota dealers and 1 point for every \$1 spent everywhere else Visa is accepted.*

Visit www.toyotarewardsvisa.com for complete details.

Toyota Financial Services (TFS)[†] is a leading provider of automotive financial services, offering an extensive line of financing plans along with a variety of vehicle and payment protection products to Toyota customers and dealers in the U.S. For more information on TFS products and services, visit www.toyotafinancial.com

*On approved credit. You must have a valid permanent home address in the 50 United States or the District of Columbia. Terms, conditions and restrictions apply and are fully described in the Toyota Rewards Visa Cardmember Agreement and the Toyota Rewards Program Terms and Conditions received with your card. Points earned are based on net purchases. Points-earning maximums apply and points will expire as described in the Rewards Terms and Conditions. Redemption only available at participating Toyota dealerships in the continental U.S. and Alaska. Points cannot be redeemed for cash. Please contact your participating Toyota dealer for information regarding restrictions your dealer may impose on the use of credit cards related to vehicle purchases or leases. The creditor and issuer of the Toyota Rewards Visa is Toyota Financial Savings Bank. Toyota Financial Services is a service mark used by Toyota Financial Savings Bank.

[†]Toyota Financial Services is a service mark for Toyota Motor Credit Corporation and Toyota Motor Insurance Services, Inc.

WARRANTIES

Every Toyota Car, Truck and SUV is built to exceptional standards. And that's not idle boasting. We back it up with these Limited Warranty Coverages: **Basic:** 36 months/36,000 miles (all components other than normal wear and maintenance items). **Hybrid-Related Component Coverage:** Hybrid-related components, including the HV battery, battery control module, hybrid control module and inverter with converter, are covered for 8 years/100,000 miles. The HV battery may have longer coverage under emissions warranty. Refer to applicable *Warranty and Maintenance Guide* for details. **Powertrain:** 60 months/60,000 miles (engine, transmission/transaxle, drive system, seatbelts and airbags). **Rust-Through:** 60 months/unlimited miles (corrosion perforation of sheet metal). **Emissions:** Coverages vary under Federal and California regulations. Refer to applicable *Warranty and Maintenance Guide* for details. **Accessories:** For Genuine Toyota Accessories purchased at the time of the new vehicle purchase, the Toyota Accessory Warranty coverage is in effect for 36 months/36,000 miles from the vehicle's in-service date, which is the same coverage as the Toyota New Vehicle Limited Warranty. For Genuine Toyota Accessories purchased after the new vehicle purchase the coverage is 12 months, regardless of mileage, from the date the accessory was installed on the vehicle, or the remainder of any applicable new vehicle warranty, whichever provides greater coverage, with the exception of car covers. Car covers are warranted for 12 months from the date of purchase and do not assume any coverage under the Toyota New Vehicle Limited Warranty. You may be eligible for transportation assistance if it's necessary that your vehicle be kept overnight for repairs covered under warranty. Please see your authorized Toyota dealership for further details. For complete details about Toyota's warranties, please visit www.toyota.com, refer to the applicable *Warranty and Maintenance Guide* or see your Toyota dealer.

Some vehicles are shown with available equipment. Seatbelts should be worn at all times. For details on vehicle specifications, standard features and available equipment in your area, contact your Toyota dealer. A vehicle with particular equipment may not be available at the dealership. Ask your Toyota dealer to help locate a specifically equipped vehicle. All information presented herein is based on data available at the time of printing, is subject to change without notice and pertains specifically to mainland U.S.A. vehicles only. Prototypes shown. Actual production vehicles may vary.

Toyota strives to build vehicles to match customer interest and thus they typically are built with popular options and option packages. Not all options/packages are available separately and some may not be available in all regions of the country. See toyota.com for information about options/packages commonly available in your area. If you would prefer a vehicle without any or with different options, contact your dealer to check for current availability or the possibility of placing a special order.

All information presented herein is based on data available at the time of printing, is subject to change without notice and pertains specifically to mainland U.S.A. vehicles only. Prototypes shown. Actual production vehicles may vary





Scheduled vehicle maintenance is essential to both safety and dependability. For that reason, we've included a no cost maintenance plan with the purchase or lease of every new Toyota. For 2 years or 25,000 miles, whichever comes first, your new Toyota will be covered for all normal factory scheduled service, as well as for 24/7 roadside assistance*. It's standard peace of mind, and Toyota is one of the first full-line brands to offer anything like it. Why do we go to such lengths? Simply put, we want the loyalty of our customers to outlast even our vehicles. For all the details, please call, visit online or stop by your local Toyota dealer today.

*Covers normal factory scheduled service. Plan is 2 years or 25K miles, whichever comes first. The new vehicle cannot be part of a rental or commercial fleet, or a livery/taxi vehicle. See participating Toyota dealer for plan details. Valid only in the continental U.S. and Alaska. Roadside assistance does not include parts and fluids.